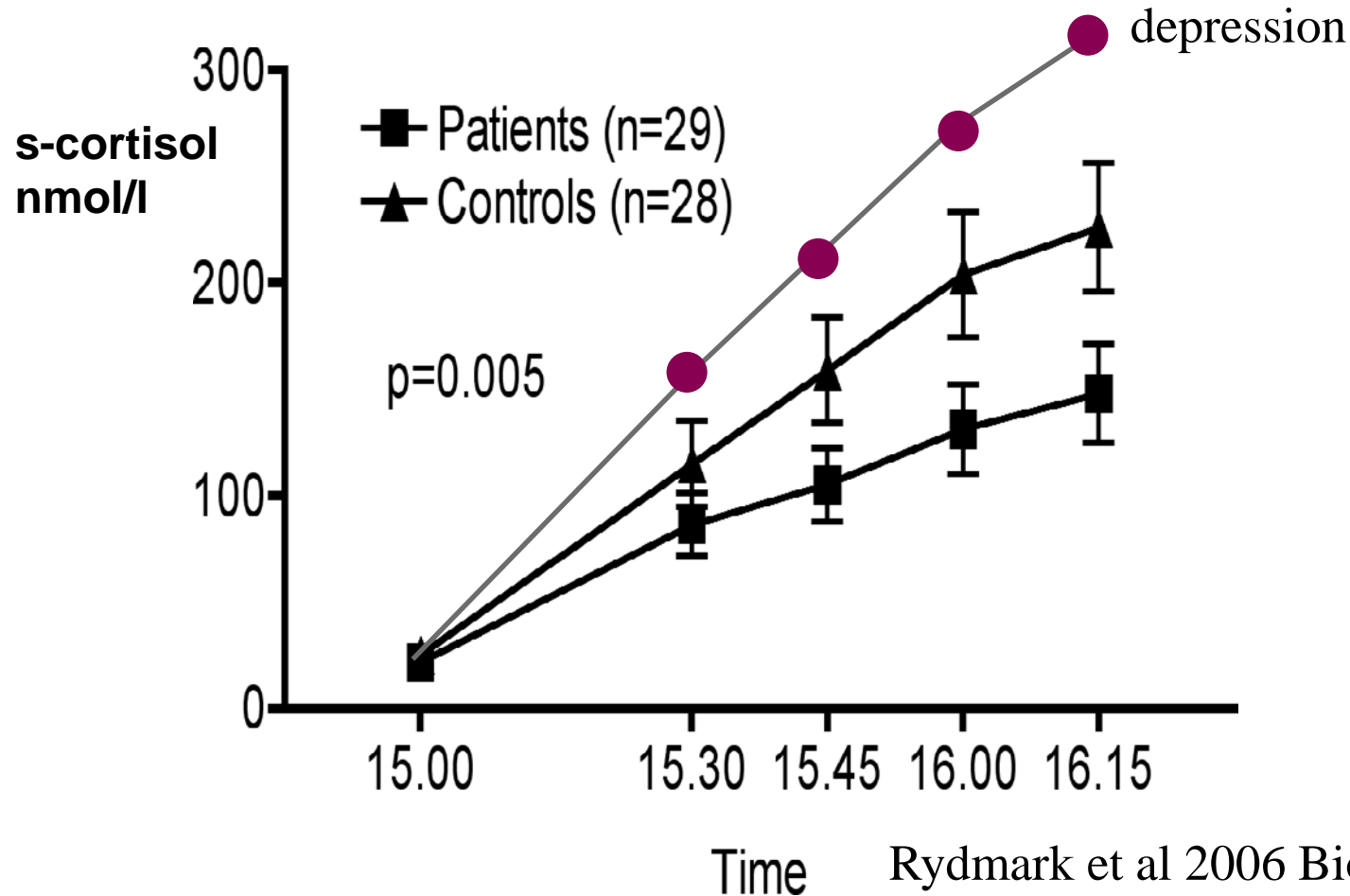


# Plasmanivåer av VEGF och EGF hos kvinnor med utmattningssyndrom

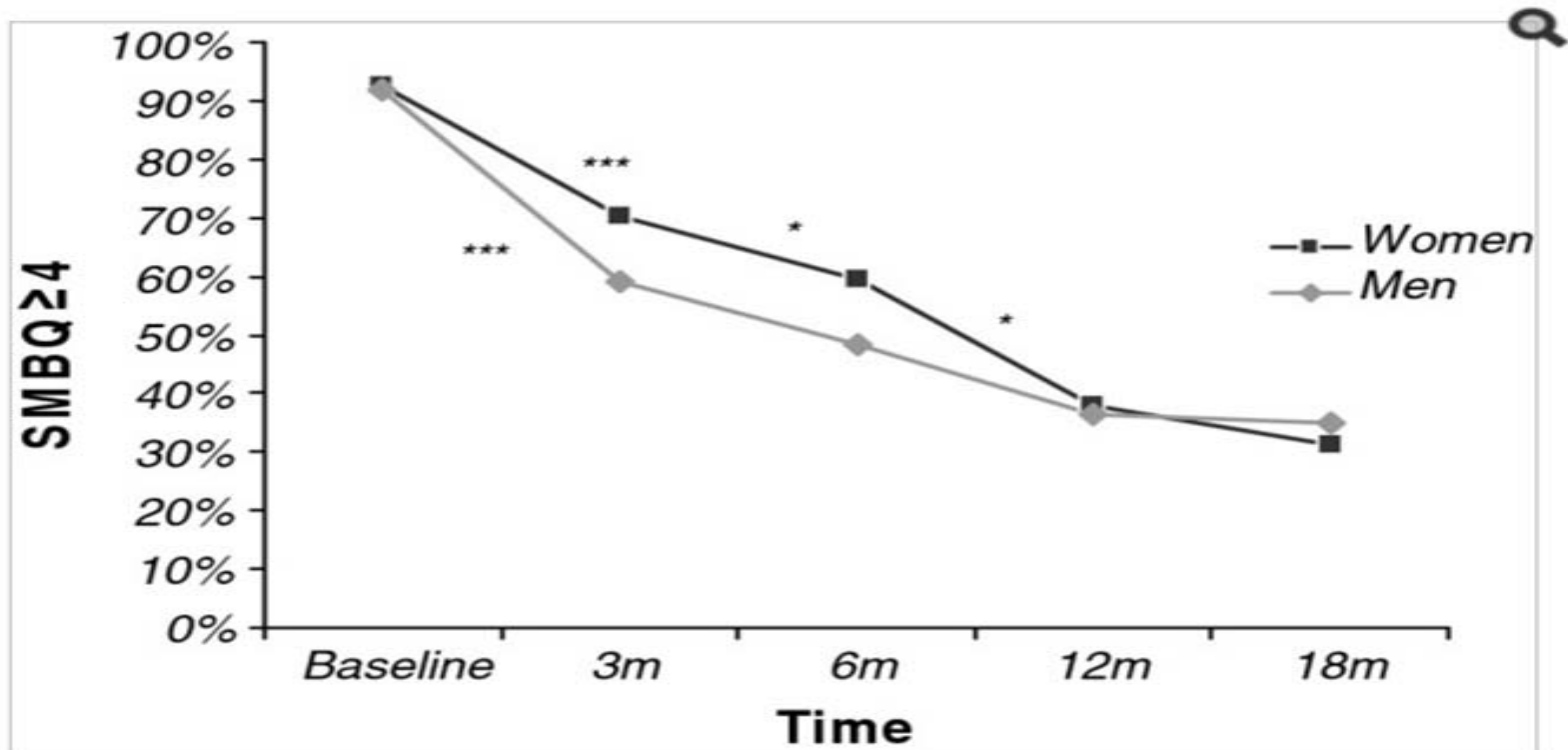
Johanna Wallensten,  
specialist i allmänmedicin,  
ST- läkare Rehabiliteringsmedicinska kliniken,  
doktorand



# Dex-CRH-test vid utmattningssyndrom



# Symtom på utmattning kvarstår hos 1/3 efter 18 mån



Glise et al BMC Psychiatry. 2012; 12: 18

# Possible biomarkers of chronic stress induced exhaustion - a longitudinal study

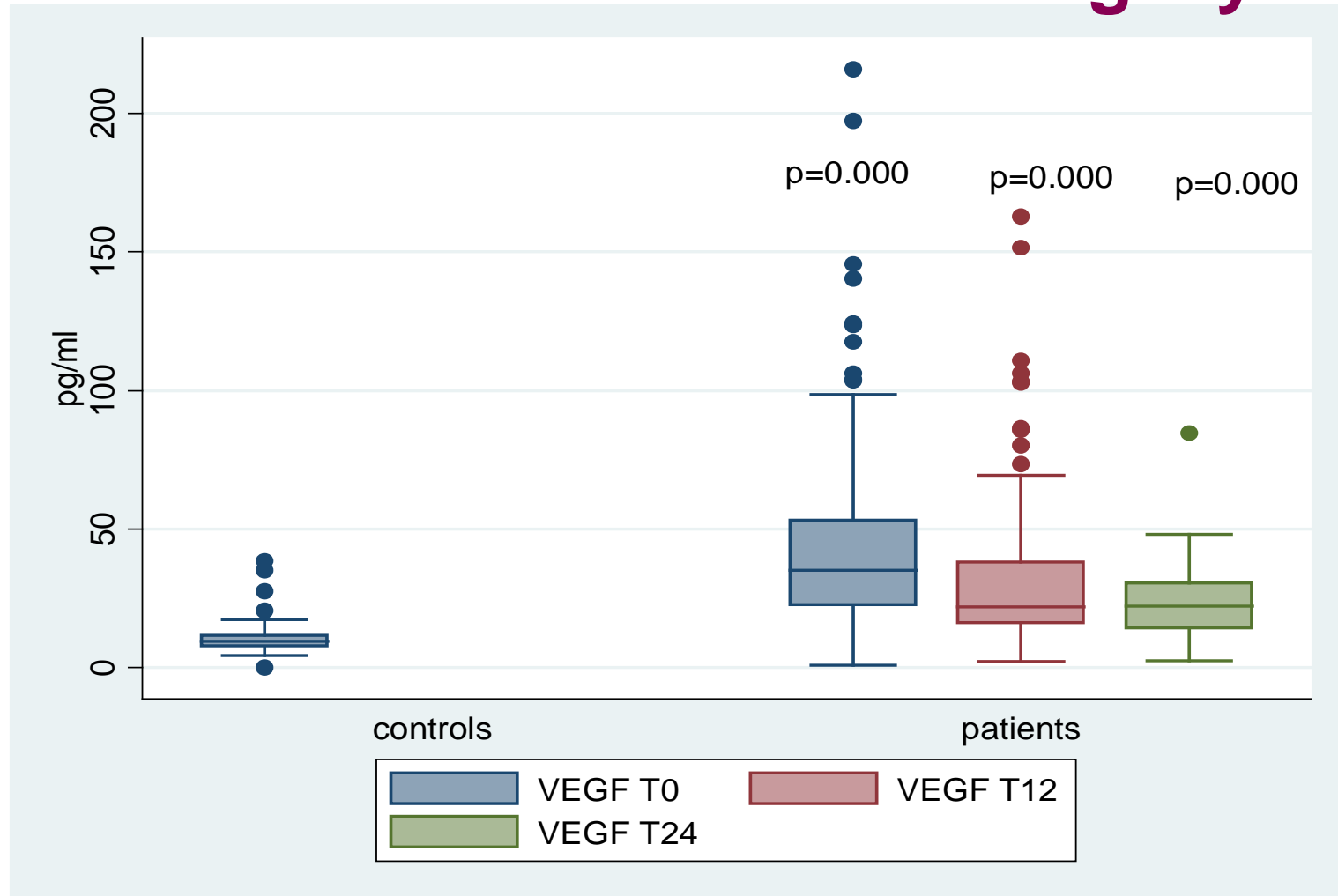
Johanna Wallensten<sup>1,2</sup>, Marie Åsberg<sup>2</sup>, Åke Nygren<sup>2</sup>, Robert Szulkin<sup>3,4</sup>, Håkan Wallén<sup>2,5</sup>, Fariborz Mobarrez<sup>2,6</sup>, Anna Nager<sup>2,7</sup>

## *Affiliations*

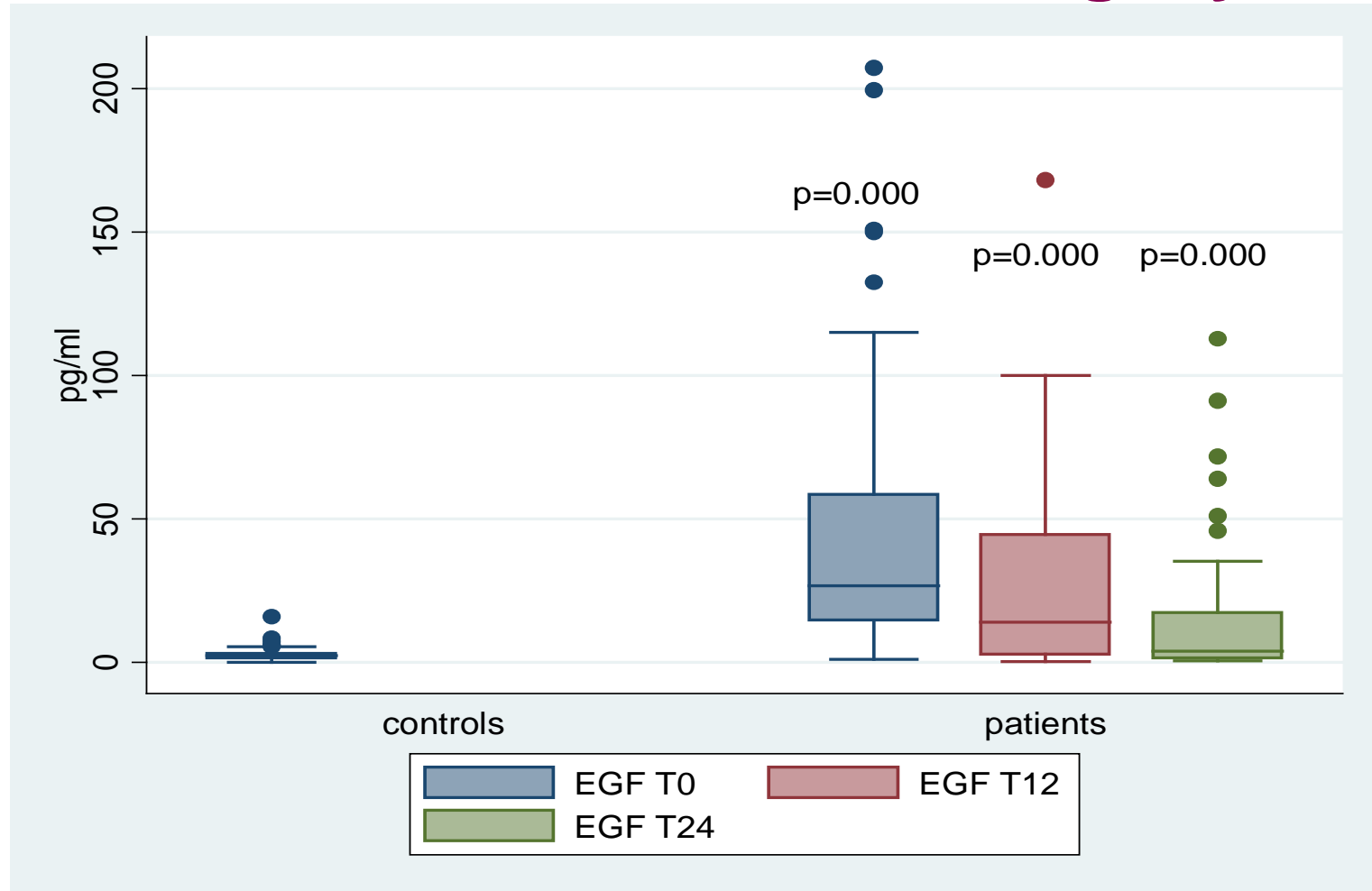
1 Division of Rehabilitation Medicine, Danderyd University Hospital, Stockholm, Sweden

2 Department of Clinical Sciences, Karolinska Institute, Danderyd University Hospital, Stockholm, Sweden

# VEGF under 2 års tid vid utmattningssyndrom



# EGF under 2 års tid vid utmattningssyndrom



# Finns ett samband med stroke?

## **Serum Brain-Derived Neurotrophic Factor and Vascular Endothelial Growth Factor Levels Are Associated With Risk of Stroke and Vascular Brain Injury Framingham Study**

Aleksandra Pikula, MD; Alexa S. Beiser, PhD; Tai C. Chen, PhD;  
Sarah R. Preis, ScD, MPH; Demetrios Vargias, MSc; Charles DeCarli, MD; Rhoda Au, PhD;  
Margaret Kelly-Hayes, EdD, RN; Carlos S. Kase, MD; Philip A. Wolf, MD;  
Ramachandran S. Vasan, MD; Sudha Seshadri, MD

(Stroke. 2013;44:2768-2775.)

## **Chronic Stress, Depressive Symptoms, Anger, Hostility, and Risk of Stroke and Transient Ischemic Attack in the Multi-Ethnic Study of Atherosclerosis**

Susan A. Everson-Rose, PhD, MPH; Nicholas S. Roetker, BA; Pamela L. Lutsey, PhD, MPH;  
Kiarri N. Kershaw, PhD, MPH; W.T. Longstreth Jr, MD, MPH; Ralph L. Sacco, MD, MS;  
Ana V. Diez Roux, MD, PhD, MPH; Alvaro Alonso, MD, PhD

(Stroke. 2014;45:2318-2323.)